

# CRIMPING TOOL

●NH 1( HAND RATCHET TOOL )  
NON-INSULATED TERMINALS&SLEEVES  
TUBULAR TERMINALS 1.25, 2, 3.5, 5.5, 8mm<sup>2</sup>



WEIGHT = 470g LENGTH = 280mm

NH 20( HAND RATCHET TOOL )  
NON-INSULATED FLAG RING TERMINALS  
1.25, 2mm<sup>2</sup>



WEIGHT = 490g LENGTH = 275mm

NH6 1( HAND RATCHET TOOL )  
NON-INSULATED TERMINALS&SLEEVES.  
1.25, 2mm<sup>2</sup>



WEIGHT = 220g LENGTH = 185mm( SHORT HANDLE )

○NH 5( HAND RATCHET TOOL )  
INSULATED TERMINALS&SLEEVES  
0.3, 0.5mm<sup>2</sup>



WEIGHT = 450g LENGTH = 265mm

NHE 4( HAND RATCHET TOOL )  
NON-INSULATED OPEN ENDS  
E-S, E-M, E-L



WEIGHT = 530g LENGTH = 300mm

○NH 60( HAND RATCHET TOOL )  
NON-INSULATED&INSULATED  
TERMINALS/SLEEVES 0.3, 0.5mm<sup>2</sup>



WEIGHT = 227g LENGTH = 190mm( SHORT HANDLE )

●NH 9( HAND RATCHET TOOL )  
NON-INSULATED TERMINALS&SLEEVES  
TUBULAR TERMINALS 2, 3.5, 5.5, 8, 14mm<sup>2</sup>



WEIGHT = 570g LENGTH = 297mm

○NH 32( HAND RATCHET TOOL )  
INSULATED TERMINALS & SLEEVES  
0.3/0.5, 1.25, 2mm<sup>2</sup>



WEIGHT = 550g LENGTH = 280mm

UL/CSA

Crimp with our tool for UL/CSA listed products.

Otherwise crimps may not be approved by UL/CSA.

NOTE 1 ) ● : JIS, UL·CSA ○ : UL·CSA



# CRIMPING TOOL

○NH 11 (HAND RATCHET TOOL )  
INSULATED TERMINALS & SLEEVES  
1.25mm<sup>2</sup>



WEIGHT = 455g LENGTH = 265mm

○NH 37 (HAND RATCHET TOOL )  
CLOSED ENDS & INTERMEDIATE CONNECTORS  
1.25, 2, 5.5mm<sup>2</sup>



WEIGHT = 455g LENGTH = 280mm

○NH 12 (HAND RATCHET TOOL )  
INSULATED TERMINALS & SLEEVES  
2mm<sup>2</sup>



WEIGHT = 455g LENGTH = 265mm

○NH 36 B (HAND RATCHET TOOL )  
CLOSED ENDS & INTERMEDIATE CONNECTORS  
2, 5.5, 8mm<sup>2</sup>



WEIGHT = 520g LENGTH = 300mm

○NH 13 (HAND RATCHET TOOL )  
INSULATED TERMINALS & SLEEVES  
3.5, 5.5mm<sup>2</sup>



WEIGHT = 900g LENGTH = 325mm

○NH 63 (HAND RATCHET TOOL )  
CLOSED ENDS & INTERMEDIATE CONNECTORS  
2mm<sup>2</sup>



WEIGHT = 230g LENGTH = 190mm (SHORT HANDLE)

NH 65 (HAND RATCHET TOOL )  
TGT 1.25mm<sup>2</sup>



WEIGHT = 260g LENGTH = 192mm (SHORT HANDLE)

NH 66 (HAND RATCHET TOOL )  
TGW 1.25mm<sup>2</sup> (TWIN WIRE)



WEIGHT = 260g LENGTH = 192mm

UL/CSA

Crimp with our tool for UL/CSA listed products.

Otherwise crimps may not be approved by UL/CSA.

NOTE 1) ● : JIS, UL·CSA ○ : UL·CSA

# CRIMPING TOOL

**NH 64( HAND RATCHET TOOL )**  
WP CONNECTOR  
1.25mm<sup>2</sup>, 2mm<sup>2</sup>



WEIGHT = 250g LENGTH = 200mm( SHORT HANDLE )

**NH 40( HAND RATCHET TOOL )**  
SQ CE-1HP・2HP・5HP



WEIGHT = 530g LENGTH = 300mm

**○NH 71( HAND RATCHET TOOL )**  
110 SERIES EASY LOCK CONNECTOR  
0.2 ~ 0.3, 0.5 ~ 0.75, 0.9 ~ 1.25mm<sup>2</sup>



WEIGHT = 300g LENGTH = 215mm

**NH79 ( HAND RATCHET TOOL )**  
WIRE ENDS  
TE0.5 ~ TE6



WEIGHT = 360g LENGTH = 200mm

**NH50 ( MULTI PURPOSE TYPE )**  
NON-INSULATED & INSULATED TERMINALS  
1.25, 2, 3.5, 5.5mm<sup>2</sup>



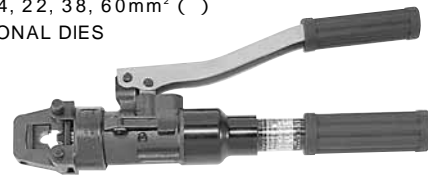
WEIGHT = 275g LENGTH = 233mm

**NH 82( HAND RATCHET TOOL )**  
HEAT SHRINK TERMINAL ( SR.SB )  
0.5mm<sup>2</sup>, 1.25mm<sup>2</sup>, 2mm<sup>2</sup>, 5.5mm<sup>2</sup>



WEIGHT = 500g LENGTH = 294mm

**●NOP 60( HYDRAULIC TOOL )**  
NON-INSULATED TERMINALS &  
SLEEVES  
TUBULAR TERMINALS  
( 8 ) 14, 22, 38, 60mm<sup>2</sup> ( )  
OPTIONAL DIES



WEIGHT = 2.1kg LENGTH = 364mm OUTPUT = 54KN

**NH25 ( HAND RATCHET TOOL )**  
CLAMP CONNECTORS  
7, 11, 16mm<sup>2</sup>



WEIGHT = 510g LENGTH = 290mm

**NOP 120( HYDRAULIC TOOL )**  
CLAMP CONNECTORS  
20, 26, 44, 60, 76, 98, 122mm<sup>2</sup>



WEIGHT = 2.9kg LENGTH = 460mm OUTPUT = 59KN

## UL/CSA

Crimp with our tool for UL/CSA listed products.

Otherwise crimps may not be approved by UL/CSA.

NOTE 1 ) ● : JIS, UL・CSA      ○ : UL・CSA

# CRIMPING TOOL

## ●NOP 150H( HYDRAULIC TOOL )

NON-INSULATED TERMINALS & SLEEVES,  
TUBULAR TERMINALS  
14, 22, 38, 60, 70, 80, 100, 150mm<sup>2</sup>



WEIGHT = 4.2kg LENGTH = 508mm OUTPUT = 118KN

## ●NOH 300K( HYDRAULIC HEAD )

NON-INSULATED TERMINALS  
60, 80, 100, 150, 180, 200, 325mm<sup>2</sup>  
(OPTION 8, 14, 22, 38, 70)



WEIGHT 7.5kg  
LENGTH 210mm  
OUTPUT 230KN

## ●NOM 60( BATTERY OPERATED HYDRAULIC TOOL )

NON-INSULATED TERMINALS & SLEEVES,  
TUBULAR TERMINALS  
( 5.5, 8 )14, 22, 38, 60mm<sup>2</sup> ( )OPTION



WEIGHT 2.6kg  
LENGTH 270mm  
OUTPUT 54KN  
( W/O BATTERY )  
AC 100V

## NP 520( HYDRAULIC HEAD )

CLAMP CONNECTORS  
154, 190, 240, 288, 365, 450, 560, 700mm<sup>2</sup>  
( ALL OPTIONAL DIES )



WEIGHT 17.5kg  
LENGTH 380mm  
OUTPUT 294KN

## NOM 150( BATTERY OPERATED HYDRAULIC TOOL )

NON-INSULATED TERMINALS & SLEEVES,  
TUBULAR TERMINALS  
14, 22, 38, 60, 70, 80, 100, 150mm<sup>2</sup>



WEIGHT 3.1kg  
LENGTH 314mm  
OUTPUT 88KN  
( W/O BATTERY )  
AC 100V

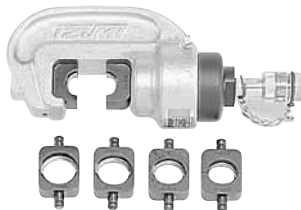
## NOP 700( HYDRAULIC PUMP )

WEIGHT 9.6kg  
LENGTH 580mm  
WIDTH 140mm  
HEIGHT 160mm



## NOH 360( HYDRAULIC HEAD )

CLAMP CONNECTORS  
154, 190, 240, 288, 365mm<sup>2</sup>  
(OPTION 20, 26, 44, 60, 76, 98, 122)



WEIGHT 4.5kg  
LENGTH 286mm  
OUTPUT 118KN

## NOM 2500( MOTOR DRIVEN HYDRAULIC PUMP )

WEIGHT 15kg  
WIDTH 244mm  
LENGTH 160mm  
HEIGHT 350mm  
AC 100V



## NOM 3000( MOTOR DRIVEN HYDRAULIC PUMP )

WEIGHT 30kg  
WIDTH 330mm  
LENGTH 350mm  
HEIGHT 420mm  
AC 100V



### UL/CSA

Crimp with our tool for UL/CSA listed products.

Otherwise crimps may not be approved by UL/CSA.

NOTE 1) ● : JIS、UL・CSA ○ : JIS ○ : UL・CSA

Optional dies.

# CRIMPING TOOL

## PNEUMATIC TOOL

○NA 10

AIR PRESSURE 0.5 ~ 0.6MPa

WEIGHT 4.7kg(BODY)  
3.2kg(FOOT PEDAL)

(BODY DIMENSION)

W 110mm  
D 290mm  
H 210mm



APPLICATOR

DIES

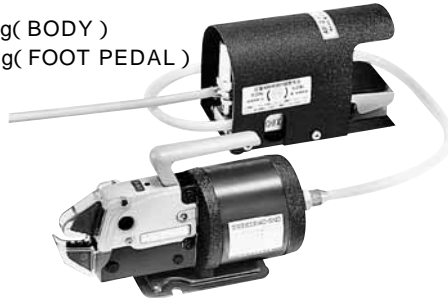
	PART No.	APPLICATOR TERMINAL
APPLICATOR	○ N10AP-T	For Insulated terminal
	○ N10AP-C	For Non-insulated & closed end
DIES	○ N10 01	Non-ins. 1.25mm <sup>2</sup>
	○ N10 02	Non-ins. 2mm <sup>2</sup>
	○ N10 03	Non-ins. 5.5mm <sup>2</sup>
	○ N10 10	Ins. miniature
	○ N10 11	Ins. Red 1.25mm <sup>2</sup>
	○ N10 12	Ins. Blue 2mm <sup>2</sup>
	○ N10 13	Ins Yellow 5.5mm <sup>2</sup>
	N10 31	Closed end CE 1
	N10 32	Closed end CE 2
	N10 33	Closed end CE 5

## PNEUMATIC TOOL

○NA 3

AIR PRESSURE 0.5 ~ 0.6MPa

WEIGHT 2.0kg(BODY)  
1.5kg(FOOT PEDAL)



## DIES



## TABLE OF DIES

PART NUMBER	TYPE OF TERMINAL	WIRE RANGE(mm <sup>2</sup> )
○ N3 5	INSULATED	0.3 - 0.5 (AWG24-18)
○ N3 7	NON-INSULATED	1.25 - 5.5 (AWG22-16 ~ 12-10)
○ N3 11	INSULATED	1.25 (AWG22-16)
○ N3 12	INSULATED	2 (AWG16-14)
○ N3 13	INSULATED	5.5 (AWG12-10)
○ N3 14	CLOSED END	2 - 5.5 (AWG16-12 ~ 12-10)
N3 15	HEAT SHRINK	0.5 (AWG22-18)
N3 16	HEAT SHRINK	1.25 - 2.0 (AWG18-14)
○ N3 34	CLOSED END	1.25 - 2.0 (AWG18-14)
○ N3 36	CLOSED END	8 (AWG8)
○ N3 70	NON-INSULATED	0.3 (AWG24-18)

UL・CSA, applicable wire range is AWG22-18.

## PNEUMATIC TOOL

NA 20

AIR PRESSURE 0.6MPa or more

WEIGHT 39kg(BODY)  
3.2kg(FOOT PEDAL)

(BODY DIMENSION)

W 160mm  
D 323mm  
H 439mm



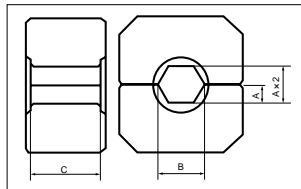
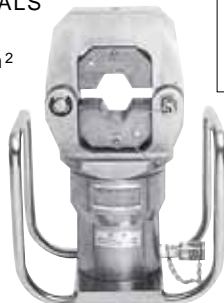
(8) 14, 22, 38, 60mm<sup>2</sup>  
( ) Optional Dies

## HYDRAULIC HEAD

NP 1000

COMPRESSION TERMINALS

OUTPUT 490KN  
RANGE 14 ~ 1000mm<sup>2</sup>  
WEIGHT 30kg  
LENGTH 396mm



APPLICABLE TERMINAL	VERTEX DISTANCE	DIES FOR NP-520			DIES FOR NP-1000		
		A	B	C	A	B	C
14	12	5.20	12	25	5.20	12	25
22-38	14	6.06	14	42	6.06	14	60
45-70	19	8.23	19	37	8.23	19	
75-100	23	9.96	23	31	9.96	23	53
110-125	26	11.26	26	27	11.26	26	47
150	29	12.56	29	24	12.56	29	42
180-200	32	13.86	32	22	13.86	32	38
240	36	15.59	36	20	15.59	36	34
250	38	16.45	38	19	16.45	38	32
325	42	18.19	42	17	18.19	42	29
400-500	47	20.35	47	15	20.35	47	26
600	51				22.08	51	24
725-850	56				24.25	56	22
1000	64				27.71	64	19

Unit:mm

## UL/CSA

Crimp with our tool for UL/CSA listed products.

Otherwise crimps may not be approved by UL/CSA.

NOTE 1) ● : JIS, UL・CSA      : JIS      ○ : UL・CSA