

SHUNT WIRES

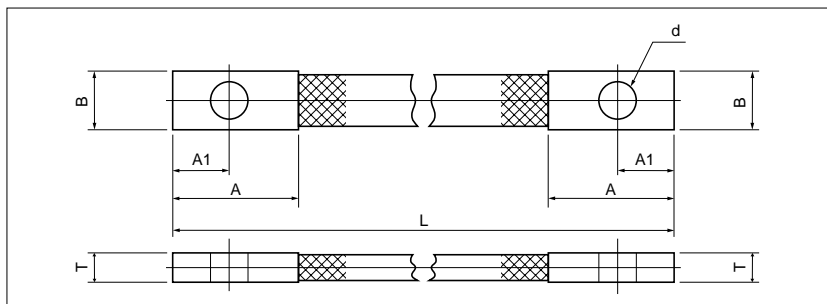
Shunt wires are applied to connections between electrical machines with vibration, stretch and bending. Shunt wire is manufactured by putting the end of a flat braided wire with a seamed high quality copper tube, and then they are compressed and molded.

Ordering example

SA 1—200
 Length(L)
 * Please put your desired length.
 Type

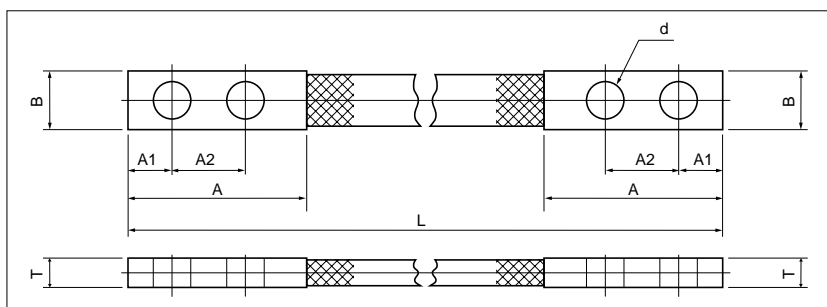
Manufacture upon request

SA TYPE



PART NUMBER	DIMENSIONS mm						BRAIDED WIRE CROSS SECTIONAL AREA mm ²	RATED CURRENT A
	STANDARD LENGTH L	B	A	A1	T	d		
SA 1-L	200	16	18	8	2.6	10	8	67
SA 2-L		22	24	11	2.7	12	14	100
SA 3-L		25	45	20	3.6		28	150
SA 4-L					6		38	200
SA 5-L					8		76	300
SA 6-L					10		114	380
SA 7-L					12		152	450

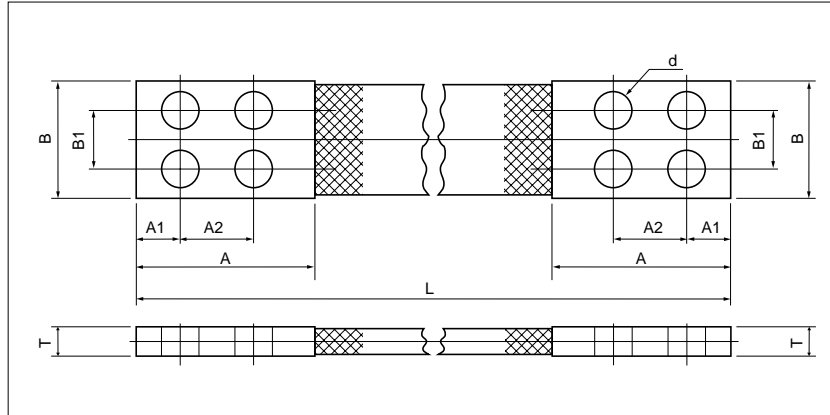
SB TYPE



PART NUMBER	DIMENSIONS mm						BRAIDED WIRE CROSS SECTIONAL AREA mm ²	RATED CURRENT A	
	STANDARD LENGTH L	B	A	A1	A2	T			d
SB 1-L	300	40	85	20	40	5.5	12	50	290
SB 2-L						7		100	410
SB 3-L						9		150	520
SB 4-L						10		200	580
SB 5-L						12		250	690
SB 6-L						14		300	770
SB 7-L	330	50	95	25	40	6.5	14	100	450
SB 8-L						9		200	650
SB 9-L						12		300	820
SB 10-L						14		400	970
SB 11-L						17		500	1100
SB 12-L						20		600	1220

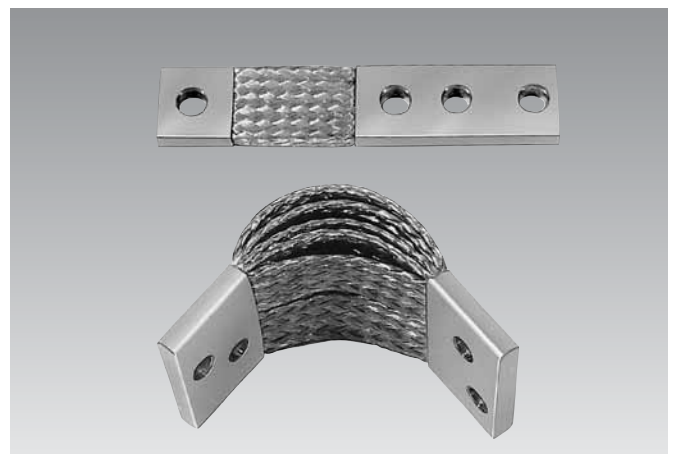
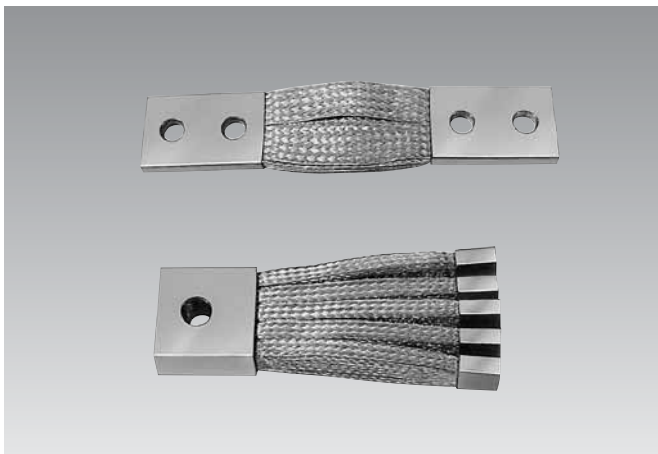
SHUNT WIRES

SC TYPE



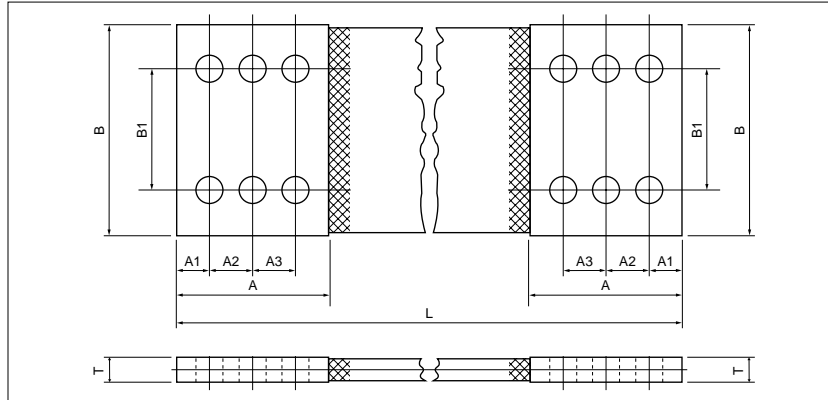
PART NUMBER	DIMENSIONS mm								BRAIDED WIRE CROSS SECTIONAL AREA mm ²	RATED CURRENT A
	STANDARD LENGTH L	B	B1	A	A1	A2	T	d		
SC 1-L	350	75	40	95	25	40	8.5	14	160	680
SC 2-L									200	760
SC 3-L									250	860
SC 4-L									300	940
SC 5-L									400	1100
SC 6-L									500	1240
SC 7-L									600	1380
SC 8-L									800	1630
SC 9-L									1000	1860
SC 10-L									1200	2070
SC 11-L	400	100	50	105	25	50	8.5	14	200	860
SC 12-L							9		250	970
SC 13-L							10		300	1060
SC 14-L							11		400	1240
SC 15-L							12		500	1380
SC 16-L							13.5		600	1530
SC 17-L							16		800	1800
SC 18-L							18.5		1000	2000
SC 19-L							21.5		1250	2200
SC 20-L							25		1500	2500
SC 21-L							28		1600	2700
SC 22-L							30.5		1800	2900

Special ordered shunt wires are available upon your request.



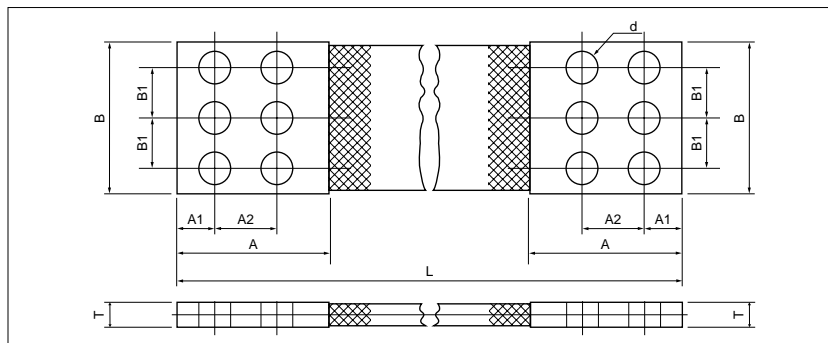
SHUNT WIRES

SD TYPE



PART NUMBER	DIMENSIONS mm									BRAIDED WIRE CROSS SECTIONAL AREA mm ²	RATED CURRENT A
	STANDARD LENGTH L	B	B1	A	A1	A2	A3	T	d		
SD 1-L	400	120	60	125	25	40	40	26.5	14	1800	3200
SD 2-L								30.2		2160	3450
SD 3-L	500	150	100	165	30	50	50	9	18	400	1460
SD 4-L								9.5		500	1640
SD 5-L								11.5		600	1800
SD 6-L								12.2		800	2100
SD 7-L								14		1000	2350
SD 8-L								16.5		1200	2600
SD 9-L								20		1600	3000
SD 10-L								23		2000	3400
SD 11-L								27.5		2100	3600
SD 12-L								28		2400	3800
SD 13-L								33		2700	4000
SD 14-L								34		2800	4100

SE TYPE



PART NUMBER	DIMENSIONS mm								BRAIDED WIRE CROSS SECTIONAL AREA mm ²	RATED CURRENT A
	STANDARD LENGTH L	B	B1	A	A1	A2	T	d		
SE 1-L	400	120	30	125	25	80	26.5	14	1800	3200
SE 2-L							30.2		2160	3450
SE 3-L	500	150	50	165	30	100	9	18	400	1460
SE 4-L							9.5		500	1640
SE 5-L							11.5		600	1800
SE 6-L							12.2		800	2100
SE 7-L							14		1000	2350
SE 8-L							16.5		1200	2600
SE 9-L							20		1600	3000
SE 10-L							23		2000	3400
SE 11-L							27.5		2100	3600
SE 12-L							28		2400	3800
SE 13-L							33		2700	4000
SE 14-L							34		2800	4100