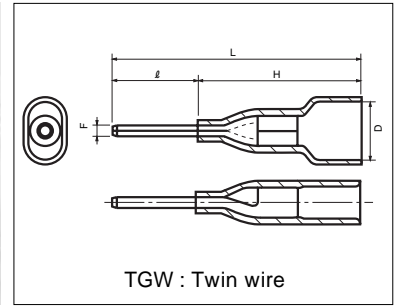
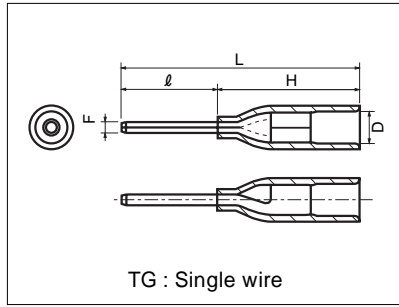


INSULATED PIN TERMINALS (TC TYPE)



TGT Pin is in line with the center of the barrel.

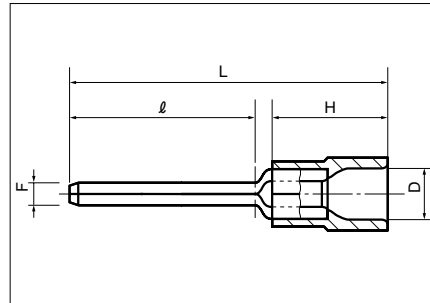


B

TGV : Vinyl
TGN : Nylon



PART NUMBER	DIMENSIONS mm					WIRE RANGE		TOOL No.	MATERIAL OF INS.	COLOR	STD QTY/BOX
	F	ℓ	L	H	D	STRANDED mm ²	AWG				
TGN TC-1.25-9T	1.1	9.0	25.0	16.0	3.6	0.3 ~ 1.65	22-16	NH 11/NH 32 NH 65 AIR TOOL BODY : NA3 DIES : N3 11T	Nylon	TRANSPARENT	100
TGV TC-1.25-11T		11.0	27.0						Vinyl	RED TRANSLUCENT	100
TGN TC-1.25-11T		9.0	26.6	17.6	6.6				Nylon	TRANSPARENT	1000
TGVV TC-1.25-9T		11.0	28.6						Vinyl	RED TRANSLUCENT	100
TGVV TC-1.25-11T											



TMEV : Vinyl
TMEN : Nylon

PART NUMBER	DIMENSIONS mm					WIRE RANGE		TOOL No.		STD QTY/BOX
	F	ℓ	L	H	D	STRANDED mm ²	AWG	HAND TOOL No. TOOL BODY No. DIES No.		
TMEV TMEN TC-0.3-9.5 [HS] ○	1.0	9.5	20.8	10.0	3.2	0.2-0.5 0.3-0.5 UL·CSA USE	24-20 22-20 UL·CSA USE	NH 5 NH 32 NH 60 NA 10 N10 10 NA 3 N3 5	1,000 V 100 x 10 N 1,000 x 1	
TMEV TMEN TC-1.25-11 [HS] ○	1.9	11.0	23.0	10.0	4.1	0.3 1.65	22-16	NH 11 NH 32	1,000 V 100 x 10 N 1,000 x 1	
TC-1.25-11S [HS] ○	1.5									
TMEV TMEN TC-1.25-16 [HS] ○	1.9	16.0	27.5	10.0	4.5	1.04 2.63	16-14	NH 12 NH 32	1,000 V 100 x 10 N 1,000 x 1	
TC-1.25-16S [HS] ○	1.5									
TMEV TMEN TC-1.25-20 [HS] ○	1.9	20.0	31.5	10.0	4.5	1.04 2.63	16-14	NH 12 NH 32	1,000 V 100 x 10 N 1,000 x 1	
TC-1.25-20S [HS] ○	1.5									
TMEV TMEN TC-2-11 [HS] ○	1.9	11.0	23.0	10.0	4.5	1.04 2.63	16-14	NH 12 NH 32	1,000 V 100 x 10 N 1,000 x 1	
TC-2-11S [HS] ○	1.5									
TMEV TMEN TC-2-16 [HS] ○	1.9	16.0	27.5	10.0	4.5	1.04 2.63	16-14	NH 12 NH 32	1,000 V 100 x 10 N 1,000 x 1	
TC-2-16S [HS] ○	1.5									
TMEV TMEN TC-2-20 [HS] ○	1.9	20.0	31.5	10.0	4.5	1.04 2.63	16-14	NH 12 NH 32	1,000 V 100 x 10 N 1,000 x 1	
TC-2-20S [HS] ○	1.5									
TMEV TMEN TC-3.5-11S [HS] ○	1.9	11.0	29.0	14.0	6.3	2.63 4.6	12	NH 13 NA 10 N10 13 NA 3 N3 13	100 V · N 100 x 1	
TMEV TMEN TC-5.5-11 [HS] ○	2.7	11.0	28.5	14.0	6.8	2.63 6.64	12-10	NH 13 NA 10 N10 13 NA 3 N3 13	100 V · N 100 x 1	

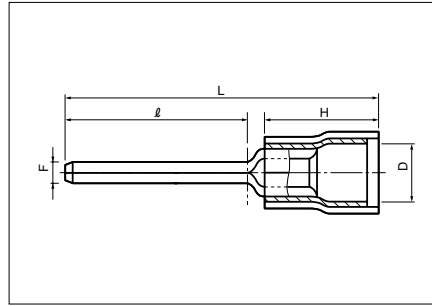
NOTE 1) ○ : UL/CSA : UL [HS] : HS-Terminal.

2) Please refer to page 31 for UL/CSA, insulator material/color, proper strip length of wire and Nylon insulated products.

INSULATED PIN TERMINALS WITH EXTRA COPPER SLEEVE (TC TYPE)



TMD (PIN)



B

TMDV : Vinyl

PART NUMBER	DIMENSIONS mm					WIRE RANGE		TOOL No.		STD QTY/BOX		
	F	ℓ	L	H	D	STRANDED mm ²	AWG	HAND TOOL No.	TOOL BODY No.		DIES No.	
TMDV	TC-1.25-11	HS	○	1.9	11.0	23.0	0.3 1.65	22-16	NH 11 NH 32	1,000 (100 × 10)		
	TC-1.25-11S	HS	○	1.5								
	TC-1.25-16	HS	○	1.9	16.0	27.5						
	TC-1.25-16S	HS	○	1.5								
	TC-1.25-20	HS	○	1.9	20.0	31.5						
	TC-1.25-20S	HS	○	1.5								
TMDV	TC-2-11	HS	○	1.9	11.0	23.0	1.04 2.63	16-14	NH 12 NH 32	1,000 (100 × 10)		
	TC-2-11S	HS	○	1.5								
	TC-2-16	HS	○	1.9	16.0	27.5						
	TC-2-16S	HS	○	1.5								
	TC-2-20	HS	○	1.9	20.0	31.5						
	TC-2-20S	HS	○	1.5								
TMDV	TC-5.5-11	HS	○	2.7	11.0	28.5	14.0	6.8	2.63 6.64	12-10	NH 13	100

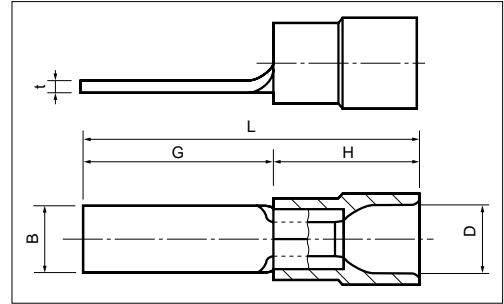
NOTE 1) ○ : UL/CSA [HS] : HS-Terminal.

- 2) Refer to page 31 for UL/CSA, insulator material/color, proper strip length of wire and Nylon insulated products.
- 3) TMDEN Type are available, see page 32.

INSULATED BLADE TERMINALS (BT TYPE)



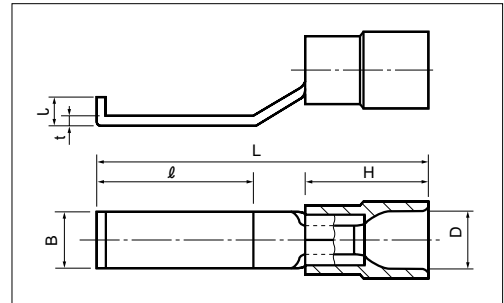
TME (BLADE)



TMEV : Vinyl
TMEN : Nylon

PART NUMBER	DIMENSIONS mm						WIRE RANGE		TOOL No.		STD QTY/BOX	
	B	t	L	G	H	D	STRANDED mm ²	AWG	HAND TOOL No.	DIES No.		
TMEV TMEN	BT 1.25-9-1 [HS] ○	2.2	0.75	19.0	9.0	10.0	0.3 1.65	22-16	NH 11 NH 32	NA 10 NA 3	N10 11 N3 11	1,000 V 100 x 10 N 1,000 x 1
	BT 1.25-9 [HS] ○	2.8		19.1	9.1							
	BT 1.25-10-1 [HS] ○	2.2		20.5	10.5							
	BT 1.25-10 [HS] ○	3.4		20.3	10.3							
	BT 1.25-11 [HS] ○	3.0		21.2	11.2							
	BT 1.25-14 [HS] ○			24.6	14.6							
	BT 1.25-18 [HS] ○			2.2	28.5							
TMEV TMEN	BT 2-9-1 [HS] ○	2.2	0.85	19.0	9.0	10.0	1.04 2.63	16-14	NH 12 NH 32	NA 10 NA 3	N10 12 N3 12	1,000 V 100 x 10 N 1,000 x 1
	BT 2-9 [HS] ○	2.8		19.1	9.1							
	BT 2-13 [HS] ○	4.6		23.0	13.0							
	BT 2-18 [HS] ○	2.2		28.5	18.5							
TMEV TMEN	BT 5.5-10 ○	2.8	0.95	24.0	10.0	14.0	2.63 6.64	12-10	NH 13	NA 10 NA 3	N10 13 N3 13	100 V · N 100 x 1
	BT 5.5-13 ○	4.5		27.0	13.0							
	BT 5.5-18 ○			32.0	18.0							

TME (LIPPED BLADE)



TMEV : Vinyl
TMEN : Nylon

PART NUMBER	DIMENSIONS mm							WIRE RANGE		TOOL No.		STD QTY/BOX	
	B	t	l	L	J	H	D	STRANDED mm ²	AWG	HAND TOOL No.	DIES No.		
TMEV TMEN	BT 1.25-17 ○	3.0	0.75	12.7	27.0	10.0	4.1	0.3 1.65	22-16	NH 11 NH 32	NA 10 NA 3	N10 11 N3 11	1,000 V 100 x 10 N 1,000 x 1
	BT 1.25-17-1 ○	4.6											
TMEV TMEN	BT 2-17 [HS] ○	3.0	0.85	12.7	27.0	10.0	4.5	1.04 2.63	16-14	NH 12 NH 32	NA 10 NA 3	N10 12 N3 12	1,000 V 100 x 10 N 1,000 x 1
	BT 2-17-1 [HS] ○	4.6											
TMEV TMEN	BT 5.5-17-1 ○	4.6	0.95	12.7	31.0	2.45	14.0	6.8	12-10	NH 13	NA 10 NA 3	N10 13 N3 13	100 V · N 100 x 1

NOTE 1) ○ : UL/CSA [HS] : HS terminal

2) Refer to page 31 for UL/CSA, insulator material/color, proper strip length of wire and Nylon insulated products.

3) TMD & TMDEN Type are also available, see page 32.